



McCain Walls™ Door Closer Installation Instructions

STEP 1: ALIGN AND MOUNT SINGLE DOOR PANEL BRACKET

Use the holes to locate the position of where the SINGLE DOOR PANEL BRACKET will be mounted and fastened to the SINGLE DOOR MODULE (see illustration below and reference red dots).

STEP 2: MOUNT DOOR CLOSER UNIT

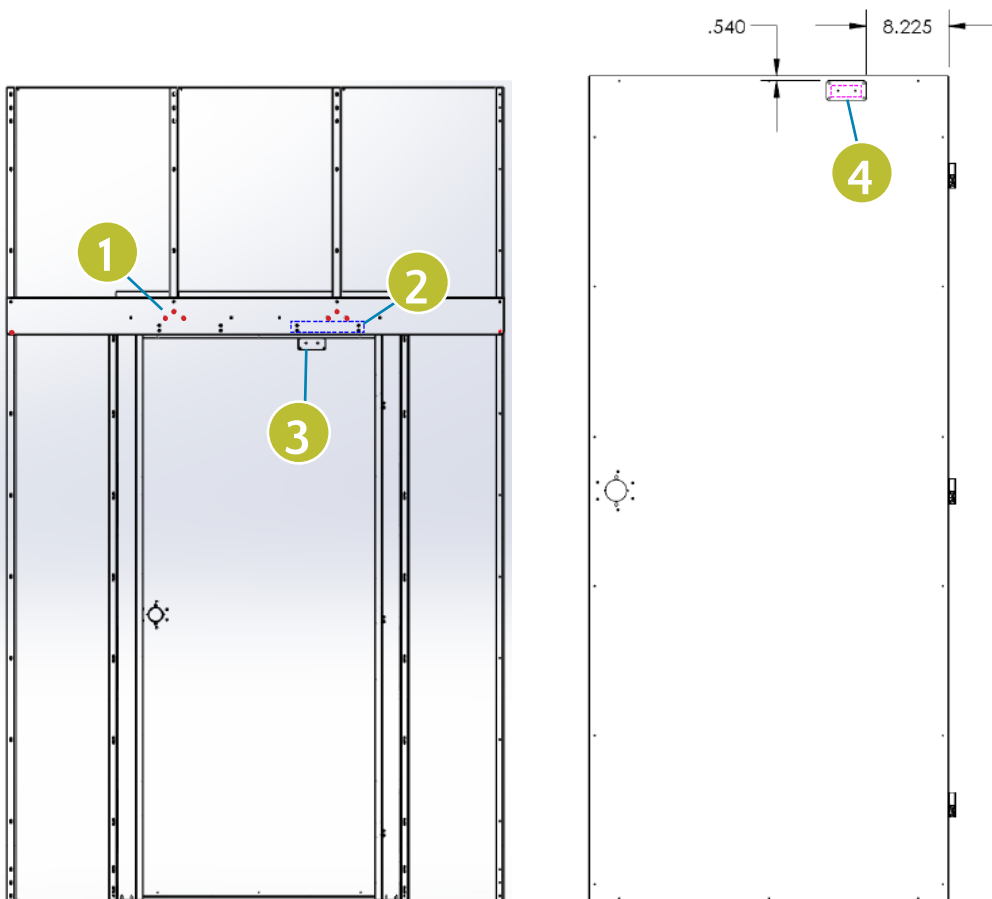
Mount the DOOR CLOSER UNIT on the SINGLE DOOR PANEL BRACKET as shown in the illustration below by a blue dash rectangle.

STEP 3: FASTEN DOOR CLOSER PLATE

Fasten the DOOR CLOSER PLATE onto the DOOR .540" from the top and 8.225" from the right hinged side of DOOR.

STEP 4: MOUNT DOOR CLOSER UNIT SMALL BRACKET

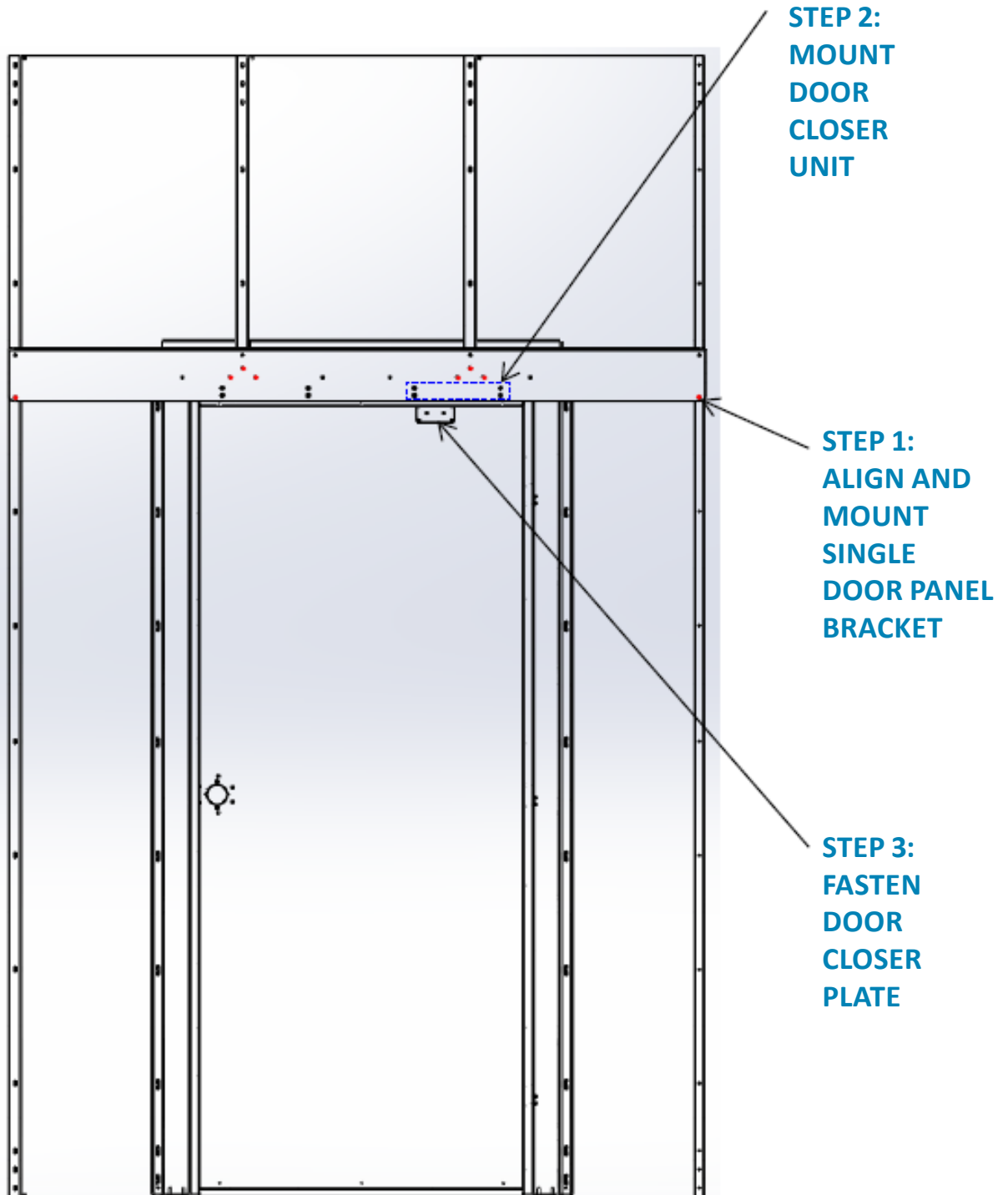
Mount the small DOOR CLOSER UNIT BRACKET onto the DOOR CLOSER PLATE that was previously mounted directly onto the DOOR (see illustration below and reference pink dash rectangle).



+ If you have questions regarding installation, please contact us at 760.295.9230.

DOOR CLOSER INSTALLATION INSTRUCTIONS FOR A SINGLE STANDARD DOOR

Supplemental Illustrations



DOOR CLOSER INSTALLATION INSTRUCTIONS FOR A SINGLE STANDARD DOOR

Supplemental Illustrations

